

# Connecting Your ProjectX Account to Quantower

This guide walks you through the steps to connect your **ProjectX-powered Prop Firm account** to **Quantower** and begin trading live or in evaluation.

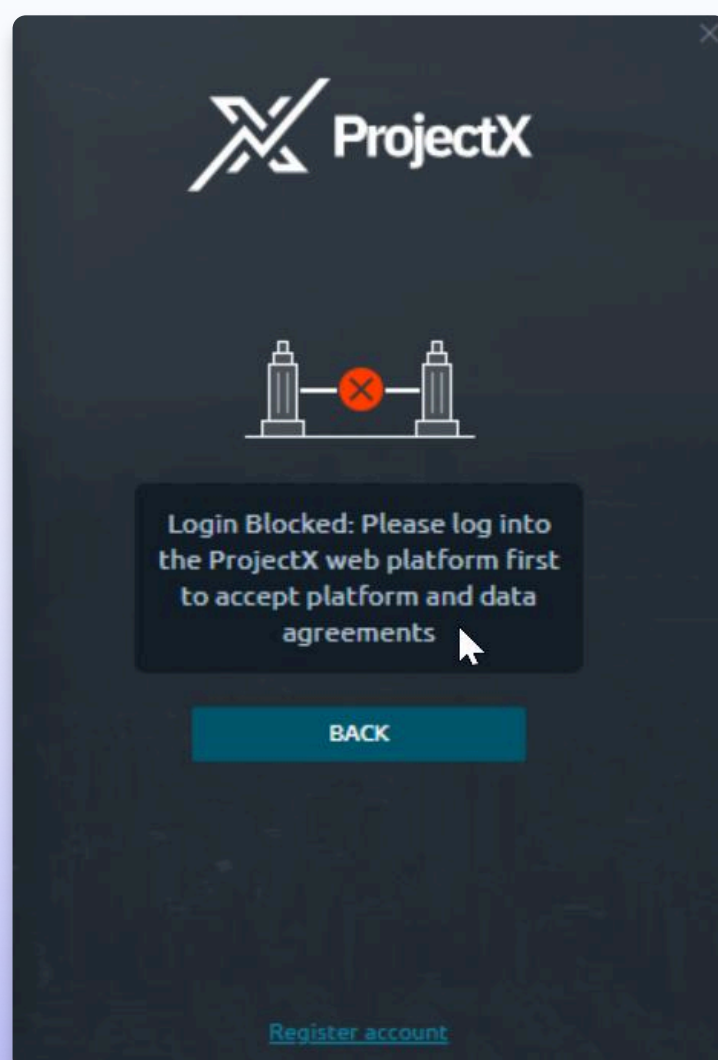
## Prerequisites

Before logging in to Quantower, ensure you:

- Have received your **account login credentials**
- Have accepted the **market data and platform agreements** by logging into the ProjectX platform

### Important:

You must log in to the ProjectX platform at least once to accept the required agreements. If this step is skipped, you will not be able to connect via Quantower.



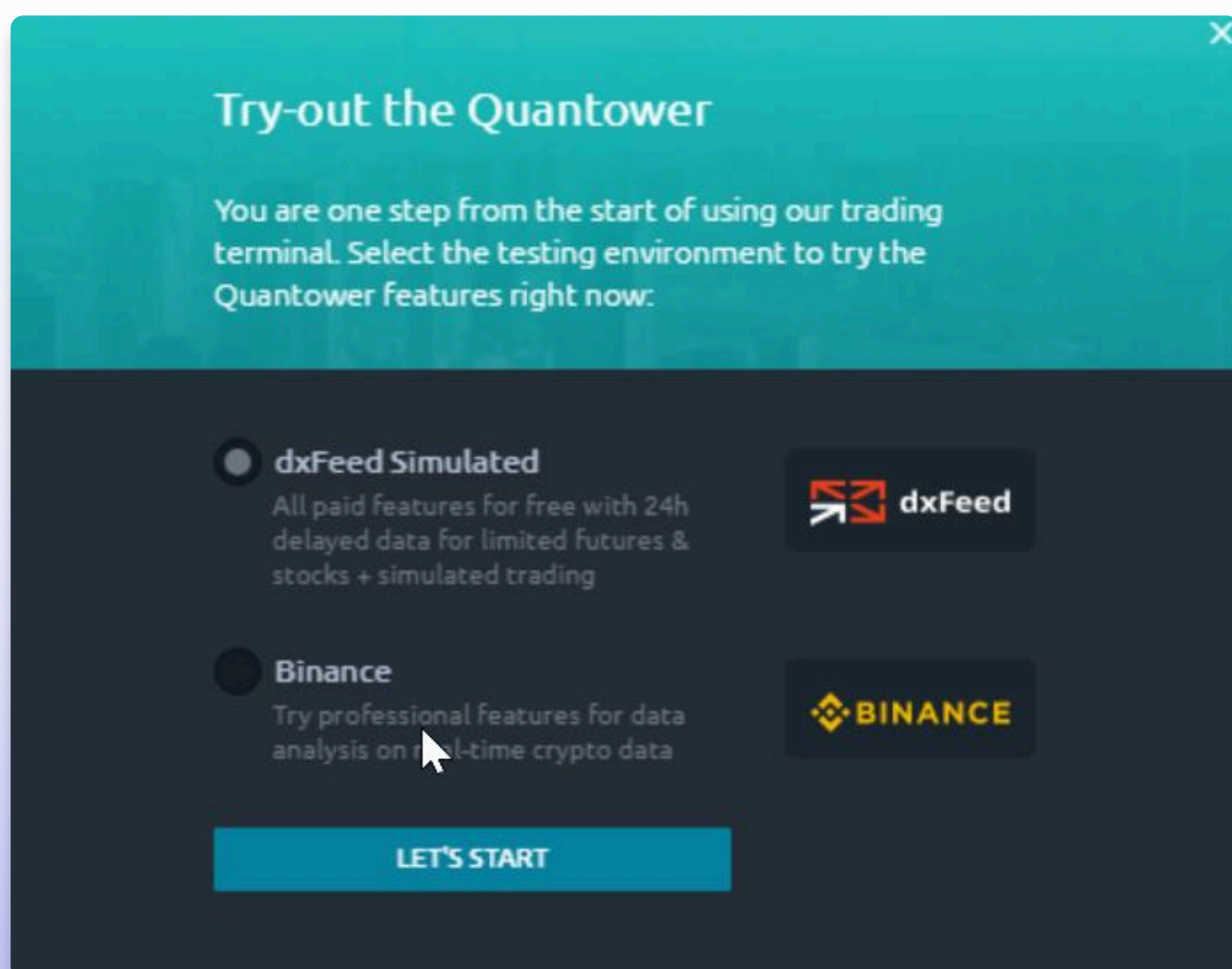
# First-Time Setup

*(If You're Downloading Quantower for the First Time)*

1. **Download** Quantower from the official Quantower website
2. After downloading, **click “Extract”** when prompted



3. The platform will launch automatically with **DX Feed** selected by default — **leave this as-is for now**

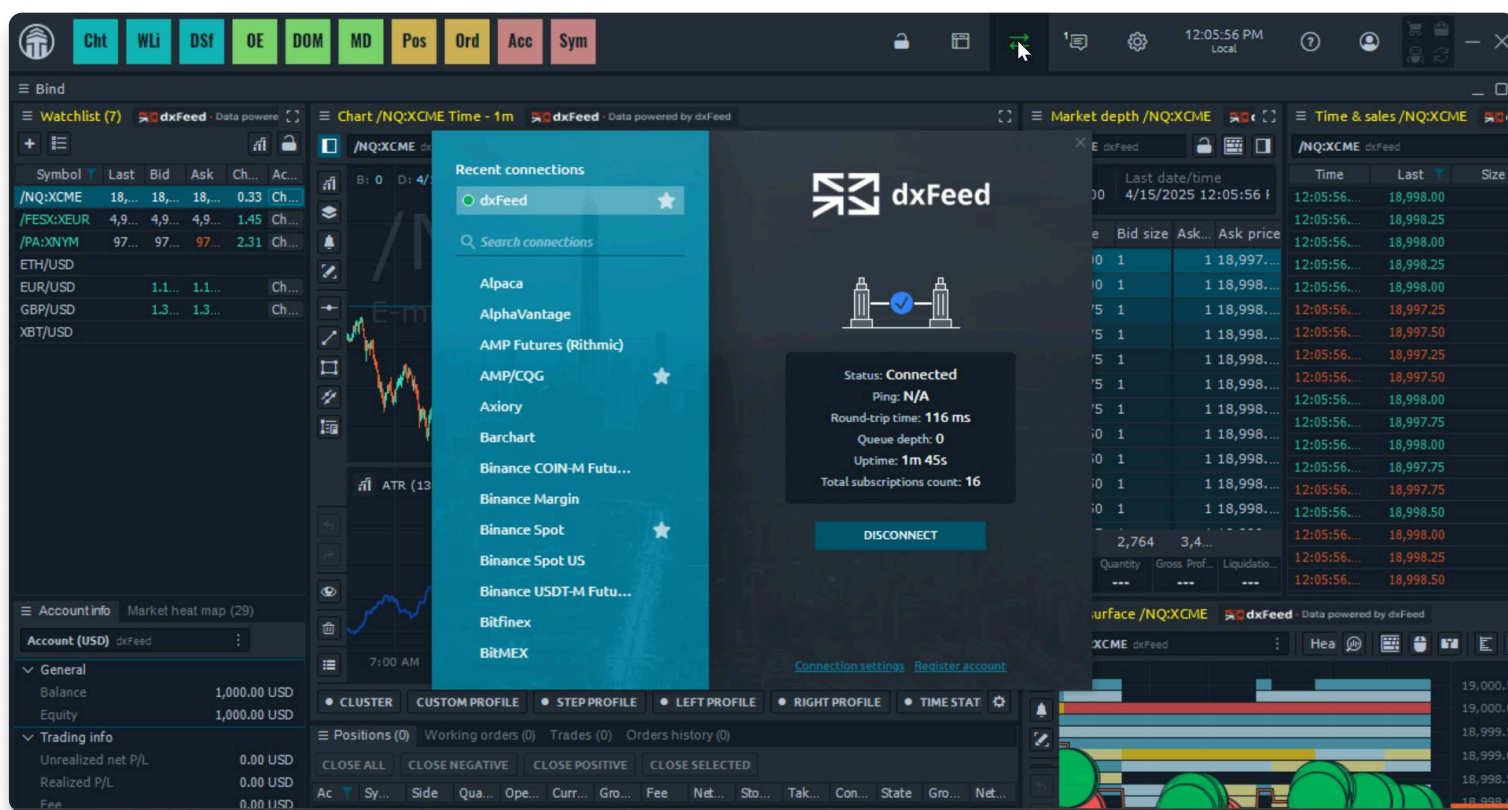




4. Click the “**Connections**” button located in the top header

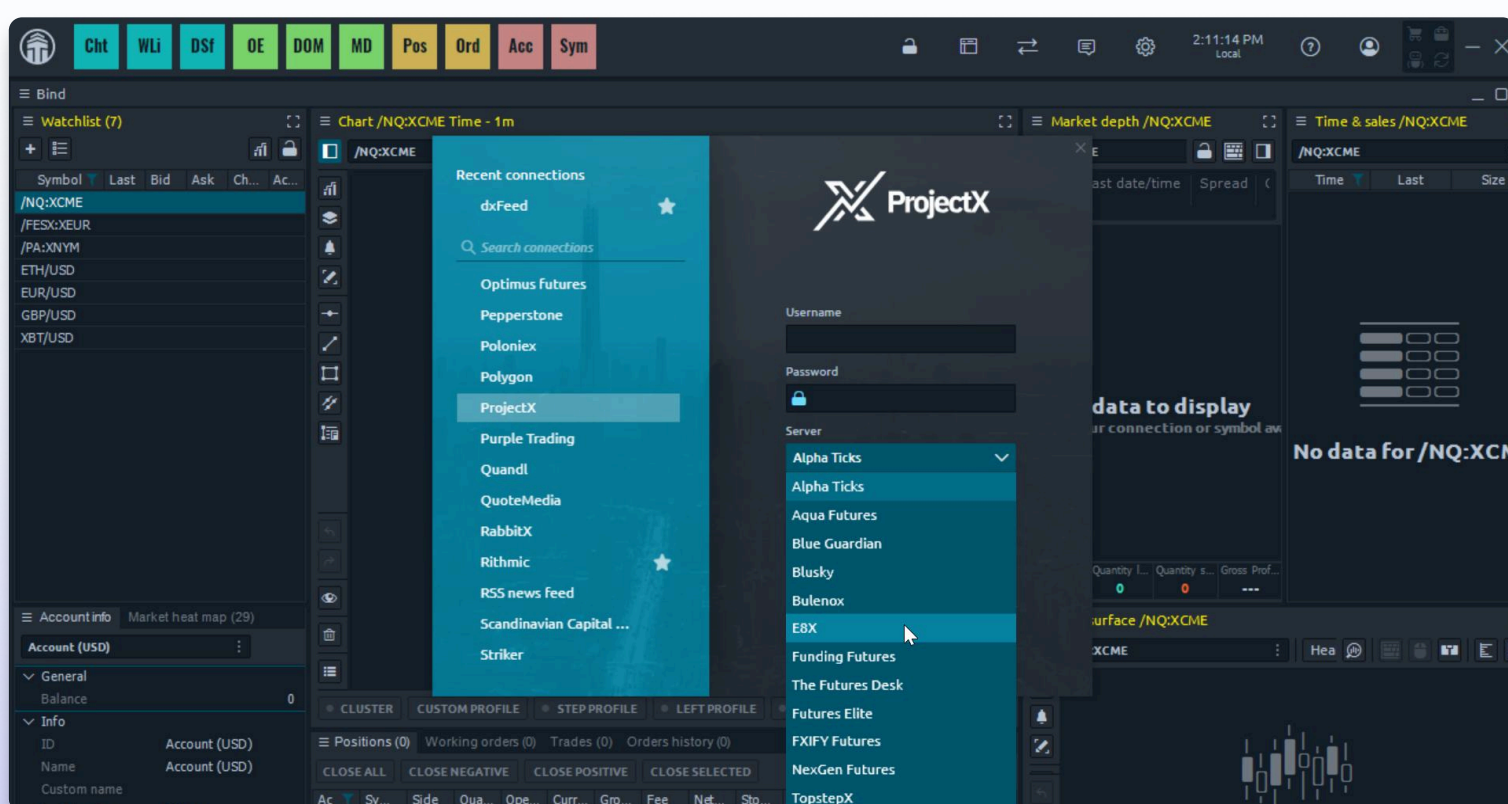


5. **Disconnect** from **DX Feed** or any other default connection



6. From the list of available connections, **select “ProjectX”**

7. In the **Server** dropdown menu, select your firm



8. Enter your **prop firm credentials** for ProjectX and click **Login**

## If You Already Have Quantower Installed

1. Open **Quantower**
  2. Click the “**Connections**” button at the top
  3. **Disconnect** from any active connection (e.g., *DX Feed*)
  4. Select “**ProjectX**” from the list of available connections
  5. In the **Server** dropdown, choose your Prop Firm
  6. Log in using your **ProjectX credentials**
- 

## You're Connected!

Once connected, you'll have full access to your **prop firm's evaluation or funded account** through Quantower, with real-time data, charts, and order management powered by ProjectX.

---

## Having Issues?

If you encounter any connection issues:

- Make sure you've first logged into the ProjectX platform to accept all agreements first
- Double-check your **username/password**
- Confirm you've selected **your firm** under the **Server** dropdown

For further support, reach out to **your firm for support**